

Conrad Historic Site Heritage Management Plan



This Management Plan represents the best efforts of the Carcross/Tagish First Nation and Yukon Governments to meet the requirements of the ***Carcross/Tagish Final Agreement*** and the ***Umbrella Final Agreement***.

It is meant to guide the cooperative management of the cultural and natural resources at the Conrad Historic Site.

Who is involved?



Steering Committee Members

A six member Steering Committee consisting of three members from the Carcross/Tagish First Nation, with one alternate, and three members from the Government of Yukon are guiding the planning process:

Art Johns, Carcross/Tagish

Colleen James, Carcross/Tagish

Derek Grose, Heritage Manager, Carcross/Tagish

Deborah Baerg, Carcross/Tagish (Alternate)

Barbara Hogan, Historic Sites, Yukon Government

Rebecca Jansen, Historic Sites, Yukon Government

Greg Hare, Archaeology, Yukon Government

Shannon Van Bibber, Historic Sites Planner, Yukon Government, also provided support to the Committee and the Consultant.

Public consultation process



- Consultation with the Steering Committee
- Three public workshops in January 2016
- On-line and paper questionnaire
- One-on-one consultations
- Review and feedback of progress and products

The Process



- No pre-conceived ideas
- Considered many types of values, uses and visitors
- Factors influencing the site – pre-contact heritage to mining to Montana Mountain biking
- Considered past traditional uses
- Asking questions, hearing stories
- Clear final consensus and direction

The site and its values



- West side of Windy Arm, 14 km south of Carcross
- Part of Carcross/Tagish Traditional Territory
- Open forest
- Views
- Variety of wildlife and fish species
- Significant heritage resources
- Used seasonally for camping, fishing, hiking, biking, snowshoeing



The site and its values



- Early use by Tagish Kwáan people
- Discovery of ore on Montana Mountain
- Establishment of Conrad townsite 1905-1914
- Steamboats on Windy Arm
- Buildings moved to Carcross
- Return of Tagish Kwáan for fishing, hunting and gathering
- Recreational uses, sheltered cove, campsites
- Cultural traditions, stories, memories

Heritage resources

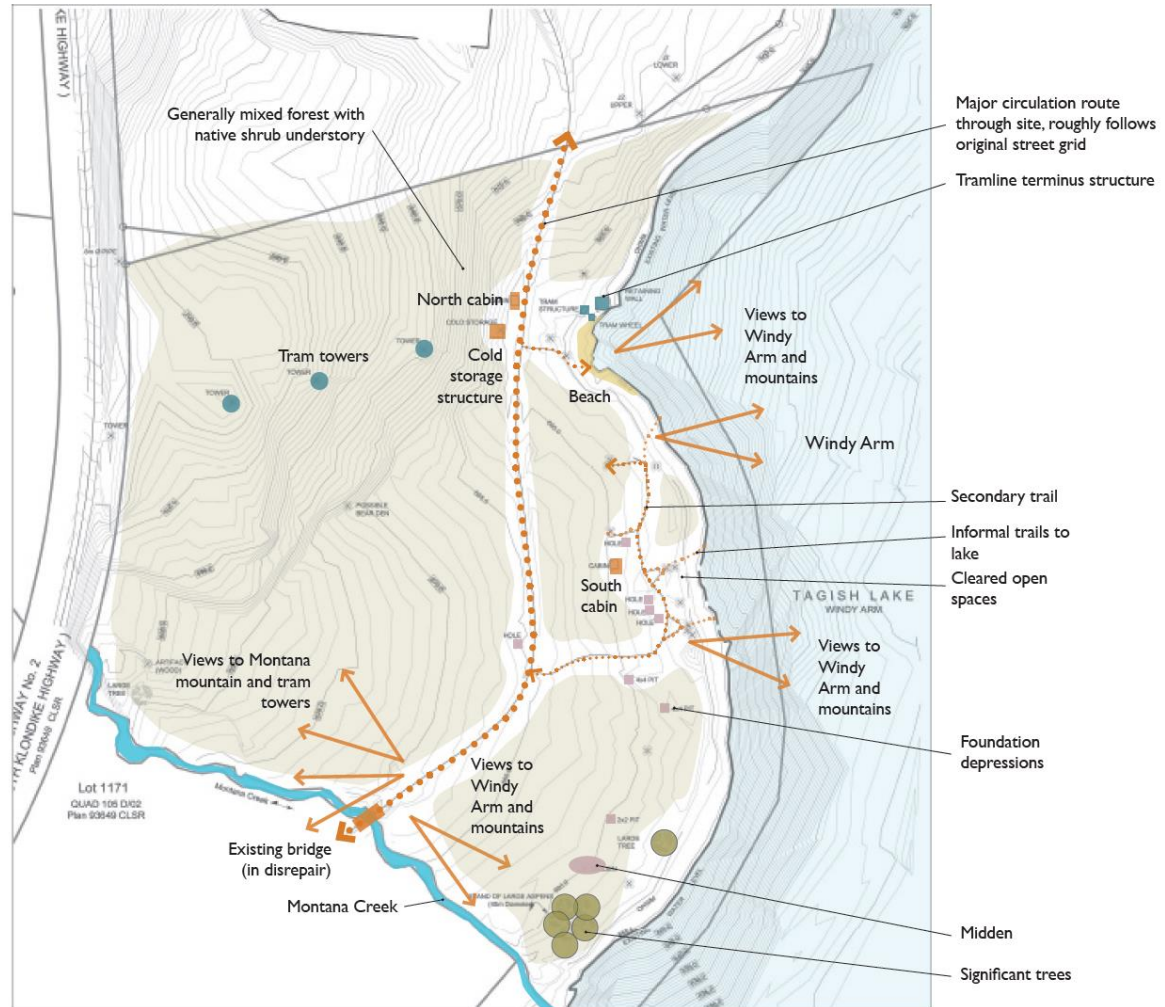


- Archaeological resources and artifacts
- Buildings and structures
 - Cabins
 - Cold storage structures
 - Tram towers and terminus
 - Cellar depressions
- Trails
- Landscape features
- Natural history features



Existing site features

Existing site features



Details of north building

As-found drawing for north building

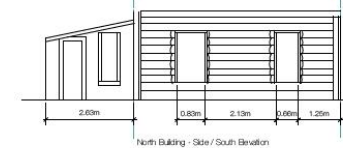
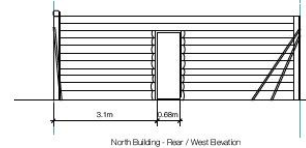
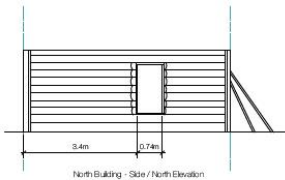
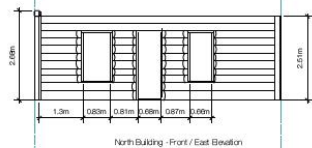
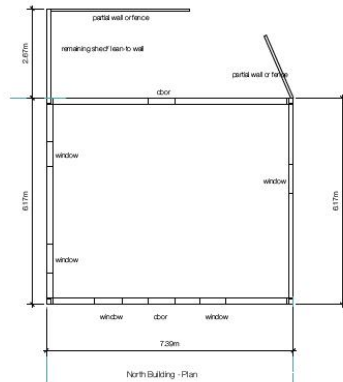
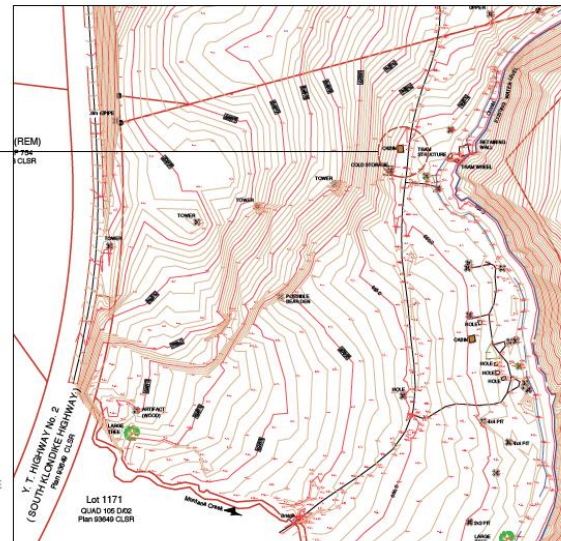
North Building Location Plan
Scale: 1:2000



North Building Location Notes

Building located approximately 130 m. from the north site access point and approximately 70 m. from edge of lake, and six metres from existing road.

Adjacent to earth-sheltered structure referred to as the 'old storage building and near tram terminus structures.



Vision and objectives

The Conrad Historic Site is a place for sharing, protecting and reconnecting with our heritage and culture



- Respect long-established uses and traditional pursuits
- Respect the artifacts
- Protect, conserve and interpret
- Present and educate

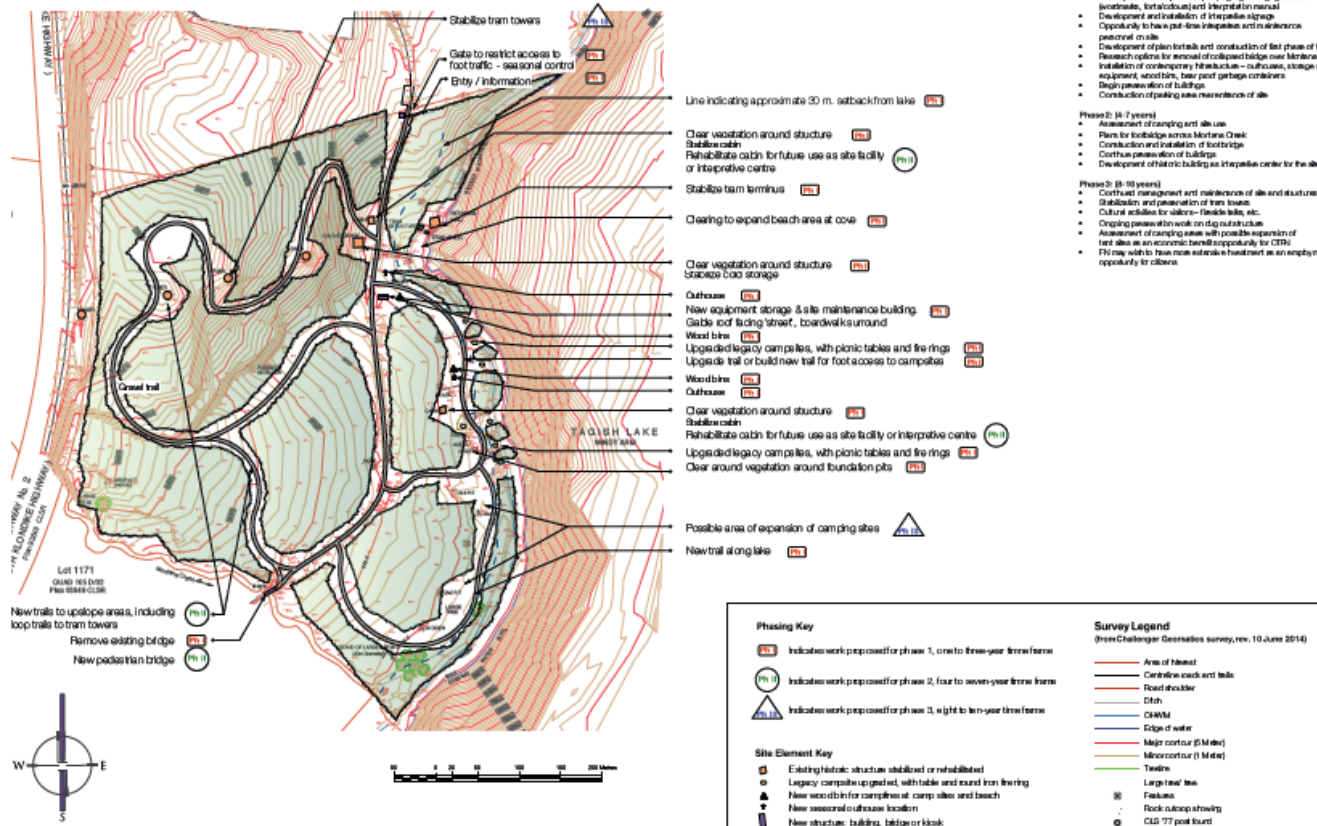
Site development



- Manage site access
- Continues current use of the site for camping and lake access
- Retain buildings, structures and artifacts
- Install interpretive signs and develop seasonal activities
- Phased approach
- Potential further development

Site development concept

Preferred development option



Site development phasing

- Phase 1: 1 to 3 years



- Selective brushing around foundations and buildings
- Emergency stabilization of historic resources
- Development of public day use area
- Development of informal camping areas
- Conservation of historic buildings and structures
- Interpretation plan, sign design guidelines
- Installation of interpretive signs
- Part time interpreters and maintenance personnel
- Plan for trails, construction of first phase of trail
- Outhouses, storage shed, wood bins, garbage containers

Site development phasing



- Phase 2: 4 to 7 years
 - Assessment of camping and site use
 - Plans for footbridge across Montana Creek
 - Construction and installation of foot bridge
 - Continue preservation of buildings
 - Development of historic building as interpretive center for the site

Site development phasing

- Phase 3: 8 to 10 years



- Continued management and maintenance of site and structures
- Stabilization and preservation of tram towers
- Cultural activities for visitors – fireside talks, etc.
- Ongoing preservation work on dug out structure
- Assessment of camping areas with possible expansion

Management structure



- A phased approach
- Coordination between governments
- Adaptive management
- Approval of management plan
- Joint committee of heritage staff from both governments will implement the management plan and manage the site



Next steps



- Compile feedback from current consultations
- Develop detailed management strategies
- Interpretation and education plan
- Tourism and marketing plan
- Implementation plan

Thank you

- Questions?

